



Defender 3000

Low-Profile Scales



Designed with Affordability in Mind Without Compromising on Quality

The OHAUS Defender 3000 Series bench scales are ideal for general weighing and simple counting applications in production, packaging, warehouse, inventory, and shipping and receiving areas. Featuring a simple yet rugged tubular-frame base design, indicators with tactile keys, backlit LCD display, built-in rechargeable battery operation and flexible mounting capabilities, these scales are ready to take your operation to the next level.

Standard Features Include:

- **Easy Carrying Handle**
Defender 3000 low-profile scale comes equipped with a front mount handle which increases mobility in applications that require moving the scale on the table.
- **Sturdy Industrial Design**
The durable Defender 3000 has a 304 stainless steel platform, aluminum IP67 load cell, as well as a painted tubular frame and base mount bracket with handle.
- **Versatile Power Capabilities Provide Unrestricted Operation**
The ultra-long-lasting internal rechargeable battery provides operation on a single charge for up to 100 hours, ensuring uninterrupted operation for five straight days.
- **Legal-for-Trade**
Defender 3000 is OIML-approved for use in all legal-for-trade applications.

Defender 3000 Low-Profile Scales

Model	D31P15BR5	D31P30BR5	D31P60BR5	D31P60BL5
Capacity × Readability (d)	15 kg × 0.002 kg 15000 g × 2 g	30 kg × 0.005 kg 30000 g × 5 g	60 kg × 0.01 kg 60000 g × 10 g	60 kg × 0.01 kg 60000 g × 10 g
Displayed Resolution	1:7500	1:6000	1:6000	1:6000
Capacity × Readability Approved (e)	15 kg × 0.005 kg 15000 g × 5 g	30 kg × 0.01 kg 30000 g × 10 g	60 kg × 0.02 kg 60000 g × 20 g	60 kg × 0.02 kg 60000 g × 20 g
Approved Resolution	1:3000	1:3000	1:3000	1:3000
Platform (W × D × min H)	305 × 355 × 123 mm			420 × 550 × 136 mm
Front View Dimensions (F1 × F2 × F3 × F4 × F5 × F6)	210 × 166 × 305 × 123 × 75 × 256 mm			210 × 166 × 420 × 136 × 80 × 371 mm
Side View Dimensions (S1 × S2 × S3 × S4 × S5)	130 × 605 × 355 × 306 × 52 mm			130 × 800 × 550 × 500 × 52 mm
Mounting	Painted steel base mount bracket with handle			
Safe Overload Capacity	125% of rated capacity			
Functions	Weighing, Parts Counting			
Weight Display	6-digit, 7-segment backlit LCD, 1 inch / 25 mm high digits			
Keyboard	4 function mechanical keys, raised, tactile			
Stabilization Time	Within 2 seconds			
Auto-Zero Tracking	Off, 0.5, 1 or 3 divisions			
Key Zeroing Range	2% or 100% of capacity			
Span Calibration	5 kg to 100% of capacity, user-selectable			
Power	AC adapter with 100-hour internal rechargeable lead acid battery included			
Interface	Bi-directional RS232C			
Operating Temperature Range	-10°C to 40°C, Maximum relative humidity 80 %			
Net Weight	11.5 kg			19.5 kg
Shipping Weight	15 kg			23 kg
Shipping Dimensions (mm)	857 × 564 × 225			857 × 564 × 225

Other Standard Features and Equipment

ABS plastic housing with internal rib reinforcements, reversible front/rear cover, backlit LCD weight display, tactile mechanical keys, built-in bidirectional RS232C with manual/continuous/interval printing, hardware configuration lockout switch, internal lead-acid rechargeable battery and AC adapter, software included for Parts Counting mode with selectable sample sizes, selectable span calibration points, averaging level, auto-zero tracking, battery saving auto-off, Geo Code geographical gravity calibration adjustment and software menu lockouts, stainless steel platform with painted carbon steel tubular frame, non-slip rubber leveling feet with locking nuts, externally visible level bubble, aluminum IP67 load cell, down-stops for overload protection.

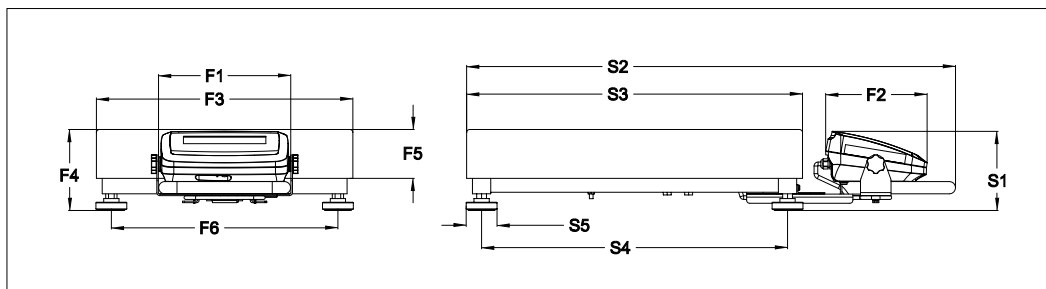
Approvals

- **Metrology:** T31P Series Indicator: EC Type approval and Test Certificate: TC7085
Base/Load Cell: OIML R60/2000-NL1-03.10 / TC5382; OIML R60/2000-NL1-03.14 / TC5367
- **Product Safety:** EN60950, EN61326, FCC, CE

Accessories

Cable, RS232	80500525
In-use Cover	30101017
Printer, Impact, SF40A	30064202
Interface kit, RS232-USB	30304101
Interface kit, RS232-Ethernet	30304102
Wheel kit, Defender Series	30372146

Outline Dimensions



OHAUS Europe GmbH
Im Langacher 44
8606 Greifensee
Switzerland

e-mail: ssc@ohaus.com
Tel: 0041 22 567 53 19
e-mail: tsc@ohaus.com
Tel: 0041 22 567 53 20

www.ohaus.com

OHAUS Corporation is an ISO 9001:2008 manufacturer

ISO 9001:2008
Registered Quality
Management System

Europe Literature CH16D364

